

Presented by:



Jamie Kennedy®

Commercial Agent

Commercial and Land Division

352-371-6100 Ext. 427

JamieKennedy@BosshardtRealty.com



Market Absorption Rates

for Gainesville/Alachua County

Absorption Rate (%) = New Listings/Closings

Presented by:

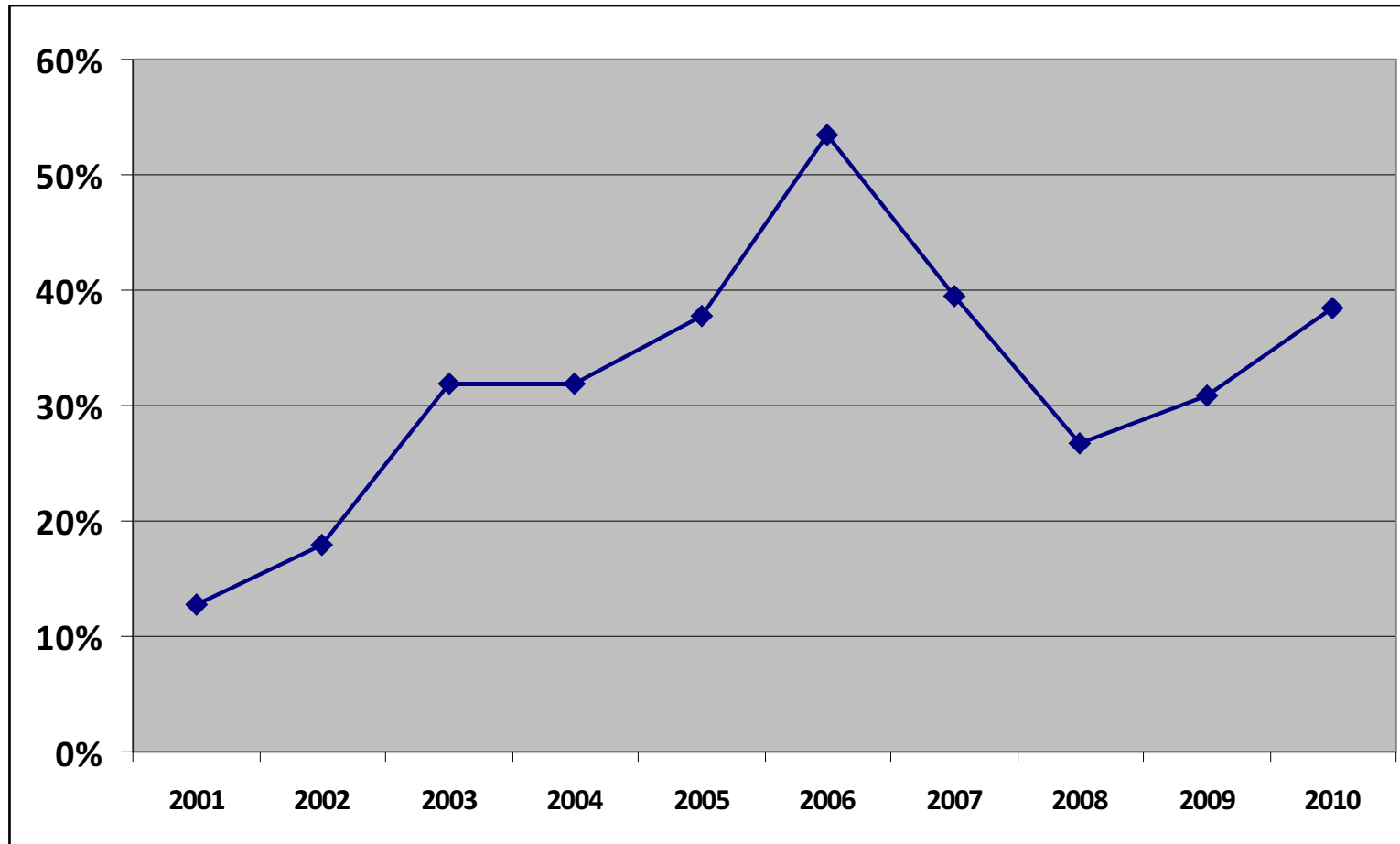


Jamie Kennedy®

Commercial Agent
Commercial and Land Division
352-371-6100 Ext. 427
JamieKennedy@BosshardtRealty.com



Commercial Leases



	2001	2002	2003	2004	2005	2006	2007	2008	2009	2010
Lease Listings	47	89	97	110	180	142	220	266	175	65
Lease Sales	6	16	31	35	68	76	87	71	54	25
Absorption	13%	18%	32%	32%	38%	54%	40%	27%	31%	38%

Presented by:

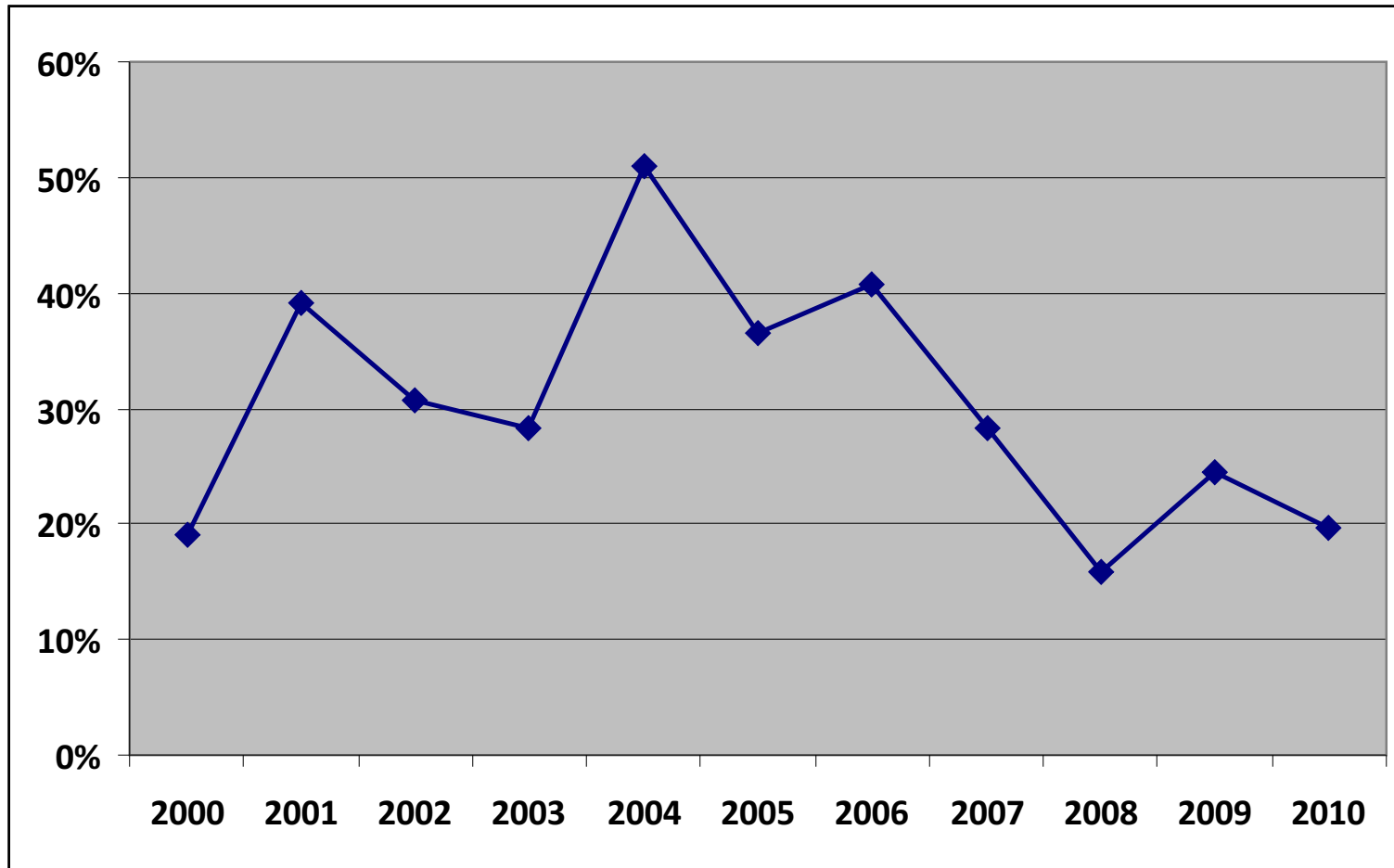


Jamie Kennedy®

Commercial Agent
Commercial and Land Division
352-371-6100 Ext. 427
JamieKennedy@BosshardtRealty.com



Commercial Sales



Sale Listings	79	74	104	99	108	153	145	141	157	147	46
Sales	15	29	32	28	55	56	59	40	25	36	9
Absorption	19%	39%	31%	28%	51%	37%	41%	28%	16%	24%	20%

Presented by:

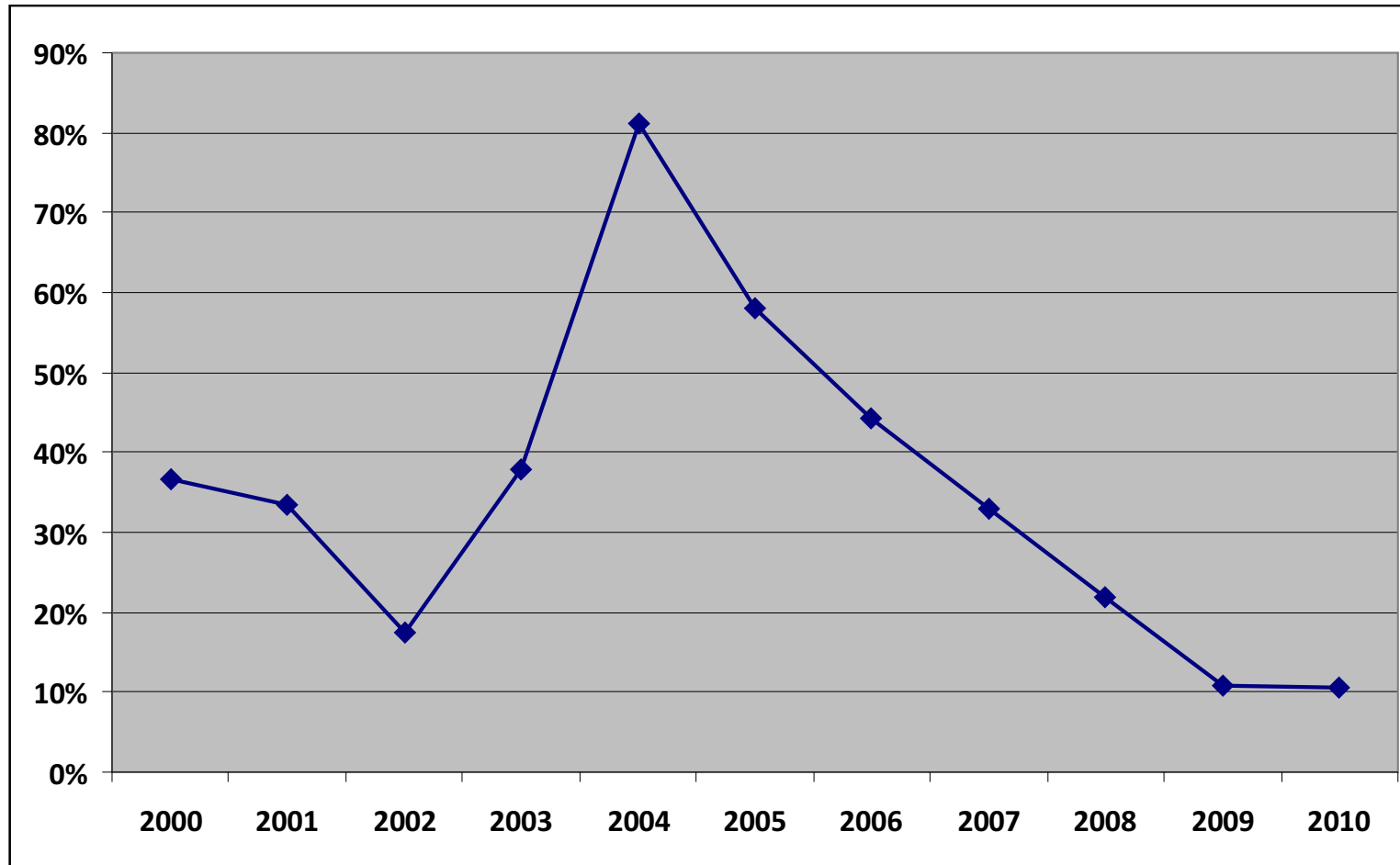


Jamie Kennedy®

Commercial Agent
Commercial and Land Division
352-371-6100 Ext. 427
JamieKennedy@BosshardtRealty.com



Commercial Land



Land Listings	41	45	46	66	37	74	88	88	87	46	38
Land Sales	15	15	8	25	30	43	39	29	19	5	4
Absorption	37%	33%	17%	38%	81%	58%	44%	33%	22%	11%	11%

Presented by:

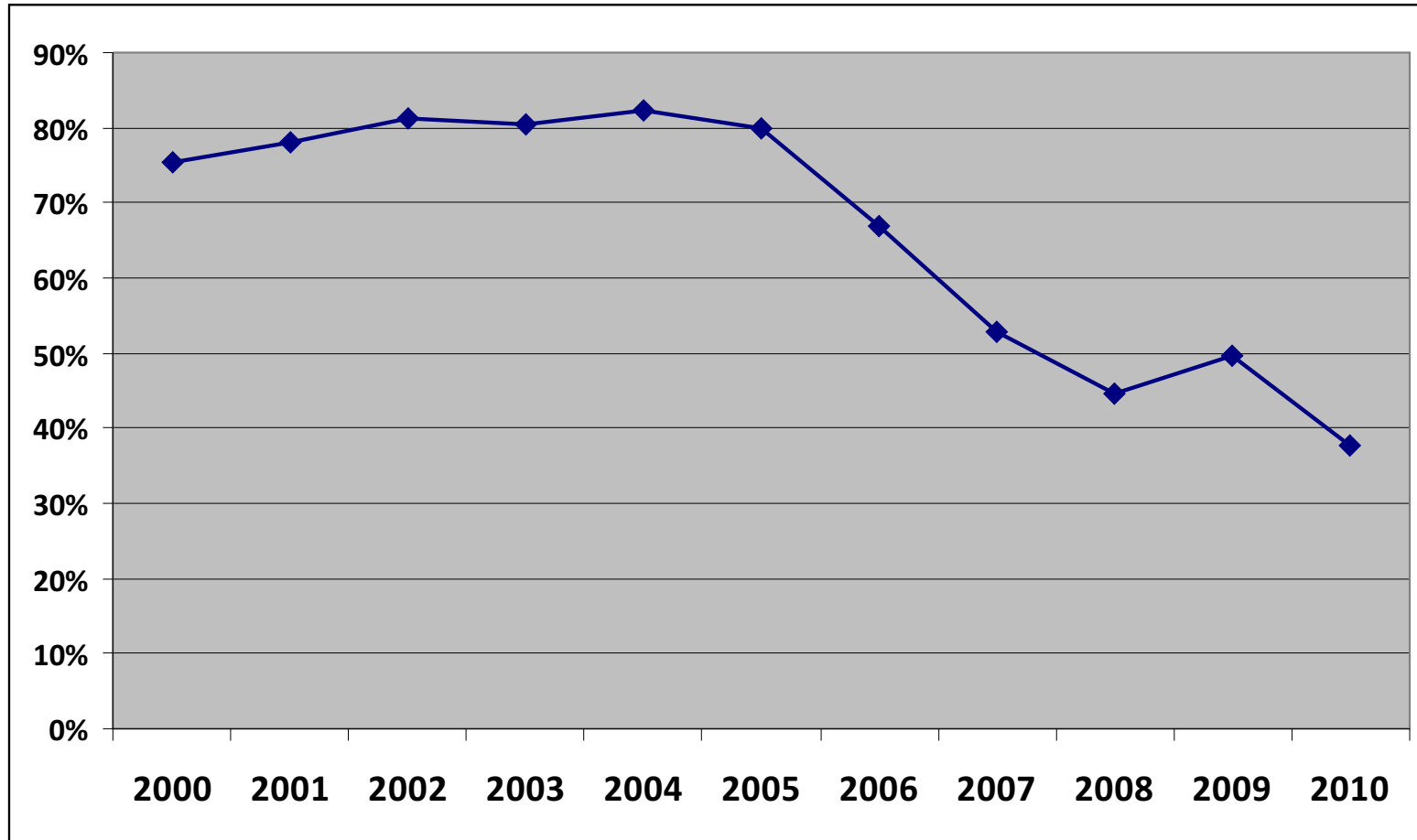


Jamie Kennedy®

Commercial Agent
Commercial and Land Division
352-371-6100 Ext. 427
JamieKennedy@BosshardtRealty.com



Residential



Residential Listings	3033	2738	2634	2880	2926	3279	3427	3369	2783	2499	1364
Residential Sales	2284	2139	2142	2319	2405	2618	2295	1783	1240	1239	516
Absorption	75%	78%	81%	81%	82%	80%	67%	53%	45%	50%	38%

Presented by:



Jamie Kennedy®

Commercial Agent
Commercial and Land Division
352-371-6100 Ext. 427
JamieKennedy@BosshardtRealty.com

